

SGCR WIRES 2019

Singapore Congress of
Radiology (SGCR) &
Workshops in Interventional
Radiology Education
Singapore (WIRES)

in conjunction with

19th Congress of the ASEAN Association of Radiology

15-17 August 2019

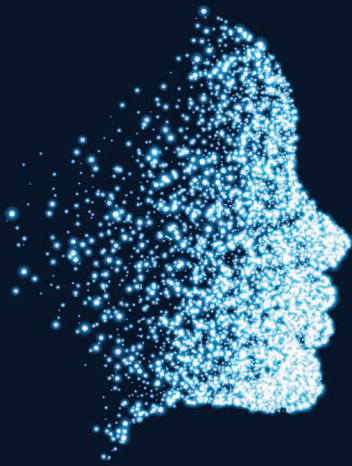


IMAGE.
INTERVENE.
INNOVATE.

www.sgcr.sg

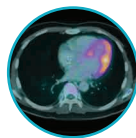
HIGHLIGHTS

- Major Tracks on Oncologic Imaging and Therapy, Neuroradiology, Head and Neck Imaging
- Current Hot Topics in Artificial Intelligence
- Radiology Nursing and Radiography
- Diverse Program Combining Hands-on Workshops, Lectures, and Interactive Sessions

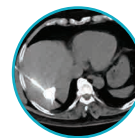


Registration is
**NOW
OPEN!**

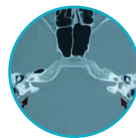
WORKSHOPS



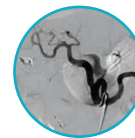
PET-CT



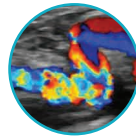
Thermal
Ablation



CT Temporal
Bone



Peripheral
Vascular
Interventions



Vascular
Ultrasound



CT Angiogram



CT
Colonography



Stroke
(Neurointervention)



Artificial
Intelligence

VENUE Raffles City Convention Centre (Swissotel the Stamford)

PRELIMINARY SCIENTIFIC PROGRAMME

FRIDAY 16 AUGUST 2019, CORE MEETING DAY 1				
AM	Oncology / Body (GIT)	Conjoint AOSOR and AAR Friendship Symposium	Neuro Session 1 (Tumor)	Information Technology Imaging Informatics
	<ul style="list-style-type: none"> Pearls and pitfalls in staging and recurrence detection of colorectal cancer: Lessons from tumor board MRI staging of rectal cancer MRI re-staging of rectal cancer post-treatment Radiotherapy for rectal cancer 	<ul style="list-style-type: none"> IRE for locally advanced pancreatic cancer Radio-frequency Ablation for Lung Metastases New Developments in the Field of High Risk Area Ablation MSK Ablation Spine Cryoablation Cryoablation in the Head & Neck Percutaneous ablation combined with TACE for adrenal metastasis from HCC 	<ul style="list-style-type: none"> MR diagnosis of intracranial germinoma Multimodality imaging of adult brainstem glioma Contrast-enhanced T2 FLAIR MR imaging of CNS DCE-MRI in CNS tumour 	<ul style="list-style-type: none"> RIS-PACS implementation and design Horror stories from the RIS-PACS frontline Diagnostic Imaging Maturity model for Enterprise Imaging Role of third party software in enterprise imaging Cybersecurity - The rising threat to patients Radiology 4.0 (Part I)
Plenary Lecture: Innovation in Medical Technology in the United States				
PM	Oncology / Body (GUT excluding prostate)	Interventional Radiology Session 2	Neuro Session 2 (Stroke/ Vascular/ IR)	Information Technology Artificial Intelligence and Radiology
	<ul style="list-style-type: none"> MR adrenals MR bladder carcinoma MR kidneys-5 imaging pearls Renal cell carcinoma: A very unusual tumor (response assessment, pseudo progression, rare sites of recurrence) 	<ul style="list-style-type: none"> Tough Liver Ablations Renal Microwave Ablation Results Tips & Tricks for Lung Ablation Nerve injuries in thermal ablation of lung tumors: Where are the danger zones? Radiofrequency Ablation of Liver Metastases Radiofrequency Ablation of Adrenal Tumours The Clinical Application of IRE for Liver Tumours The Current Development of IRE for Pancreatic Cancer Treatment in Asia 	<ul style="list-style-type: none"> Stroke mimics Intracranial collaterals imaging: the role of CT and MRI Imaging post-EVT in acute stroke - challenges and strategies 	<ul style="list-style-type: none"> Radiology 4.0 (Part II) AI and machine learning – what is SIIM's role in the Radiology Landscape? AI and analytics - Insights from industry Radiology research in AI Singapore's approach to AI engagement A-Star AI and machine learning
	Oncology / Body (Gynecologic oncology)	Interventional Radiology Session 3	CRS Leadership Series	Radiography
<ul style="list-style-type: none"> MR of adnexa-pearls and pitfalls MR staging of cervical and endometrial cancer Imaging of peritoneal disease Peritoneal disease - What the surgeon wants to know 	<ul style="list-style-type: none"> Cryoablation of HCC in high risk locations Extreme Cryoablation Image Guided Cryoablation: Pearls and Wisdom for Complex Cases Immunotherapy and Cryoablation Breast Cryoablation Extreme IR The Need for Clinical Trials in Intervention Oncology 	<ul style="list-style-type: none"> Leadership in Medical Education Radiology Communication: From Pen and Ink to Artificial Intelligence Organizational Leadership The Value of the Right Side of the Brain in Leadership 	<ul style="list-style-type: none"> An Evaluation of Diagnostic Radiography Students Perspective on Reflective Learning Practising Effective Radiation Protection in an Interventional Radiology Suite Patient dose monitoring in clinical practice 	
FY Khoo Lecture				
Congress Dinner				

PRELIMINARY SCIENTIFIC PROGRAMME

SATURDAY 17 AUGUST 2019, CORE MEETING DAY 2				
AM	Body / Oncology (HPB, Pancreas)	Interventional Radiology Session 4	Nursing	Scientific Competition
	<ul style="list-style-type: none"> MRI of liver Pitfalls in MRI liver MRI of pancreatic tumours MRI of biliary lesions/ malignancies 	<ul style="list-style-type: none"> Concept of Tace in HCC TACE of extrahepatic collateral arteries for HCC Locoregional treatments for extrahepatic HCC metastases Transarterial Ethanol Embolisation in Intermediate and Giant HCC: Can it replace cTACE? Ablative chemoembolization for intermediate stage HCC Treatment of intractable HCC Transarterial treatment of breast cancer and its metastases, colorectal mets and primary lung mets 	<ul style="list-style-type: none"> POCT Creatinine / eGFR for patient undergoing CT/ MRI with Contrast Media Cryo Ablation 	
PM	Body / Oncology (Prostate)	The Radioembolization Review	Head & Neck Session 1	Information Technology, Artificial Intelligence and More
	<ul style="list-style-type: none"> PI-RADS scoring for disease detection MRI use in prostate cancer diagnostic pathway-case based review PSMA in diagnosis and treatment Imaging of biochemical recurrence in prostate cancer 	<ul style="list-style-type: none"> SIRT beyond SIRVENIB & SARAH Utilizing radioembolization throughout the BCLC staging system Case based tips and tricks with radioembolization Role of radioembolization in cholangiocarcinoma 	<ul style="list-style-type: none"> Head and neck cancer Cervical lymphadenopathy: Imaging diagnosis and differentials Mimics of head and neck pathologies Head and neck tumor board 	<ul style="list-style-type: none"> AI and diagnostic radiology - Just lung nodule? AI/IT Showcase This segment will provide an insight into latest developments from the industry and also from R+D Singapore. Panel discussion: AI in Medicine - Hype or reality and how can we humanise the process?
	KSR – SRS Friendship Symposium (Breast)	Interventional Radiology Session 6	Head & Neck Session 2	Radiography
	<ul style="list-style-type: none"> Clinical Experience with Interventional MRI Multimodality Image Guided Ablative Therapy MRI Guided intervention for Prostate Cancer: Native and Recurrent IR for Palliative Care in Interventional Oncology Cementation / Cryoablation of pelvic mets Thermal ablation of bone tumours (rf, laser, cryo) with cement stabilisation Neurolysis in managing chronic oncological pain 	<ul style="list-style-type: none"> Multiparametric MR imaging of orbital masses Cancer of the oral cavity Cranial nerves in oncologic imaging MR imaging and DWI for thyroid lesions 	<ul style="list-style-type: none"> Dose Reference Level (DRLs) as tool for optimization; roles of radiographers Radiation Dose Reduction in Interventional Radiology: Low Dose. Fluoroscopy Protocol Cardiac MRI Harmonising Quality in Radiography 	

REGISTRATION FEES

Sign-up early to enjoy early bird fee. There is a workshop for almost everyone!

MAIN CONGRESS

Category	Early Bird Rate (by 15 May 19)	Regular Rate (after 15 May 19)	Onsite Rate (from 15 Jul 19)
Doctor	SGD 320	SGD 420	SGD 520
Trainee*/ Nurse / Allied Health	SGD 180	SGD 280	SGD 380
SRS / AAR Member / CRS Fellow**	SGD 280	SGD 380	SGD 480

WORKSHOPS

Nuclear Medicine Update 2019	Date	Doctor Rate		Trainee Rate
		Early Bird Rate/ NMS Members* (by 15 May 19)	Regular Rate (after 15 May 19)	Regular Rate
PET CT Course - Symposium	13-14 Aug 19	SGD 350	SGD 450	SGD 200
PET CT Course - Symposium + Workshop	13-15 Aug 19	SGD 700	SGD 900	SGD 400

SGCR Workshops	Date & Time	Early Bird Rate (by 15 May 19)	Regular Rate (after 15 May 19)	Onsite Rate (from 15 Jul 19)
Computed Tomography of the Temporal Bone Workshop	15 Aug 19	SGD 300	SGD 350	SGD 400
	0800 - 1300			
Vascular Ultrasound Workshop	15 Aug 19	SGD 350	SGD 400	SGD 450
	0800 - 1700			
CT Colonography Course	15 Aug 19	SGD 350	SGD 400	SGD 450
	0830 - 1800			
Siemens CRS Digital Day	15 Aug 19	SGD 350	SGD 400	SGD 450
	0900 - 1600			

Workshops in Interventional Radiology Education Singapore (WIRES)	Date & Time	Early Bird Rate (by 15 May 19)	Regular Rate (after 15 May 19)	Onsite Rate (from 15 Jul 19)
With Main Congress Registration				
Thermal Ablation Workshop	15 Aug 19	SGD 300	SGD 400	NA
	0800 - 1700			
Vascular WIRES in the Periphery 2019	15 Aug 19	SGD 200	SGD 250	SGD 300
	0800 - 1700			
Angio CT Workshop	15 Aug 19	SGD 150	SGD 200	SGD 250
	1800 - 2200			
Stroke Workshop	15 Aug 19	SGD 300	SGD 350	SGD 400
	0800 - 1700			
Without Main Congress Registration				
Thermal Ablation Workshop	15 Aug 19	SGD 350	SGD 450	NA
	0800 - 1700			
Vascular WIRES in the Periphery 2019	15 Aug 19	SGD 250	SGD 300	SGD 350
	0800 - 1700			
Angio CT Workshop	15 Aug 19	SGD 200	SGD 250	SGD 300
	1800 - 2200			

CONTACT

SGCR & WIRES 2019 Secretariat c/o The Meeting Lab Pte Ltd

695E East Coast Road, Singapore 459059 • Tel: +65 63464402 • Email: secretariat@sgcr.sg