

6th JOINT SCIENTIFIC MEETING OF RCR & HKCR

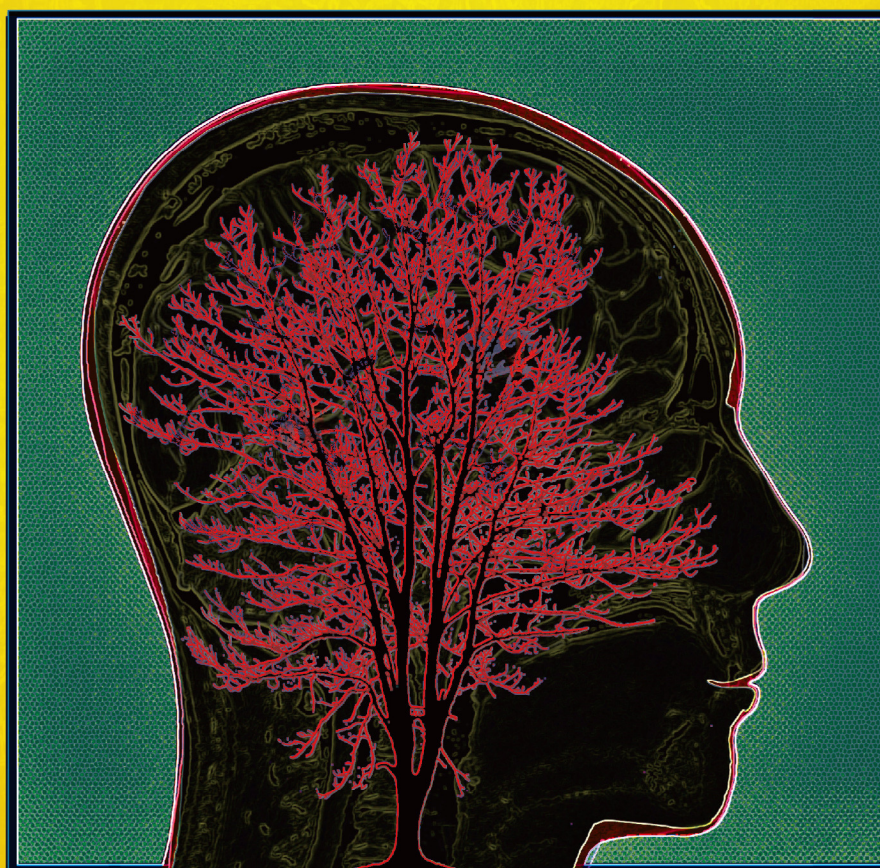


23rd ANNUAL SCIENTIFIC MEETING OF HKCR

14th - 15th November 2015 (Saturday & Sunday)

Hong Kong Academy of Medicine Jockey Club Building, Hong Kong SAR, China

ROAD TO KNOWLEDGE



SUBSPECIALTY FOCUS

Stroke Imaging and Intervention
Prostate Cancer
Neuroendocrine Tumour

www.rcr.ac.uk

www.hkcr.org

